

## Upcoming Events !

- *Sunday March 20<sup>th</sup>, 2016*  
*Whitman home in Hancock Mass. Details enclosed.*
- *Saturday May 20<sup>th</sup>, 2016*  
*Antique cars on race track at Thompson Speedway. Organized by Bruce Nichols. Contact Bruce to reserve space. Also details in future newsletter*

## President's Message

PRESIDENT'S MESSAGE - March 2016

I know it isn't actually spring yet, but as I write this, the trees are growing fat buds. Ioka Farm has already boiled OVER 100 gals of maple syrup and the daffodils are up. Soon we will be uncovering our antiques for another year of cruising. Some have been out already. There are several "rat" rods in this area and they don't worry about the salt on the roads.

The February meeting at the Nichols's home was well attended with several guests. Brian Siplo joined while there, so we welcome him into our club. Thanks to the Nichols for hosting. We worked on the meeting schedule and have some good suggestions. However, no one is available to organize a meeting for April, so we will skip that month, unless there is a volunteer soon. The May event at the Thompson Speedway sounds exciting. Bruce has been working hard to organize the event. Driving your old car on the track is very enticing. June will be at the Crook's in Rhode Island.

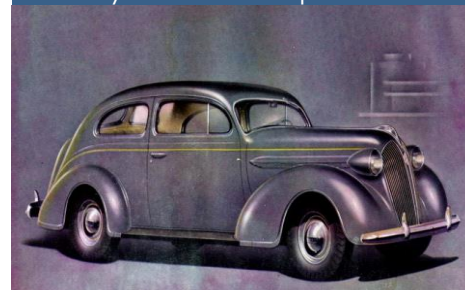
Don Palmer discussed the web site. It contains upcoming events / meetings, member's cars, cars and parts for sale, and technical articles. You may contact Don if you have items to put on the site. He is willing to give help to anyone having trouble navigating the web site.

Sunday, March 20, 2016 at the Whitman home in Hancock Mass. 3326 Rte 43, near Jiminy Peak Ski Area (Approx. 5 miles from Rte22 in NY). Lunch will be at 1:00 at IOKA Farm for pancakes, waffles, etc. followed by our meeting back at the Whitman's. More details enclosed in this newsletter.

Judy



## Featured Plymouths this Month 1937 Plymouth Lineup





## Happy Plymouth Days !!!



## Secretary's Ramblings ☺ ☺ ☺

COLONIAL REGION PLYMOUTH CLUB MEETING: Feb 21<sup>st</sup>, 2016

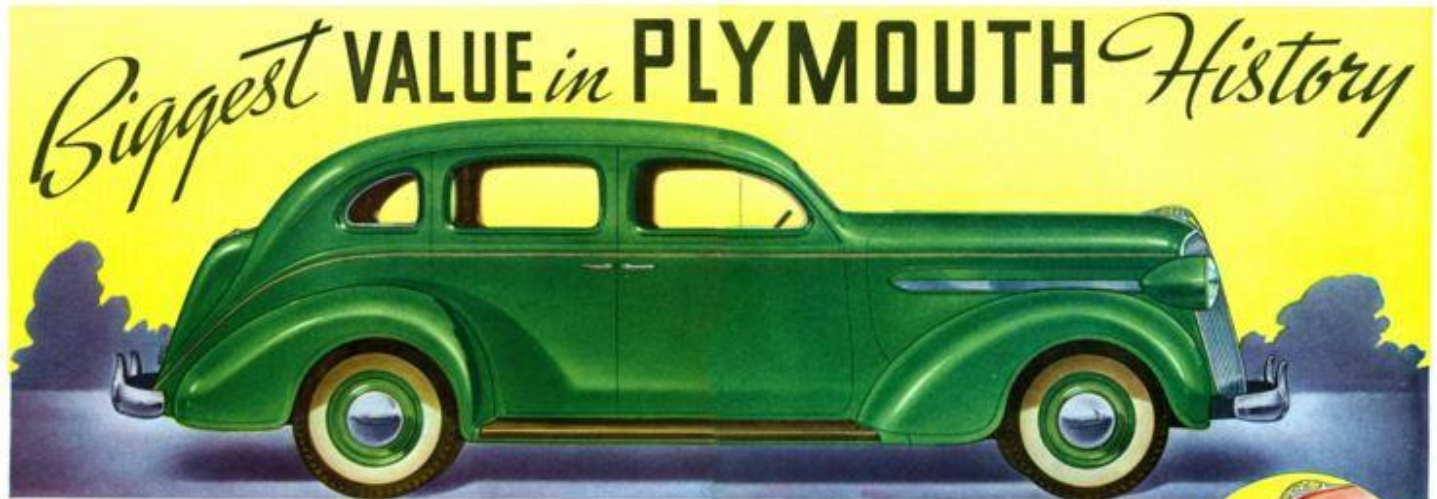
Members Present: Bill Rogers, Brian Siplo, Crooks, Palmers, Nichols. Guests: Jerry Adams, Judy Ferreira, Ron and Dale Herbert

With Doug Crook presiding over the meeting, he welcomed new member Brian Siplo and his 1951 Cranbrook. The Secretary's Report was accepted. Judi Nichols distributed the annual Treasurer's Report for all to view. Report was accepted. She gave a reminder that those who have not paid their dues should send them to her. Tom Dorward wanted the club members to know that the Chrysler Club will be holding its National Meet in Maine in September. We have a need for a Club Historian. Bruce volunteered. It was noted that Judy Whitman has the original charter and that Betty Kibbe has the club photos which will need to be given to Bruce. Judy Whitman wanted to let members

know that John Gilman had heart surgery; a card was passed around for all to sign. Don Palmer discussed the new things on the website: regional report sent to Lanny every other month, member car pictures, and selling parts/cars. Website can be viewed at [Plymouthcarclub.com](http://Plymouthcarclub.com). The next meeting will be at the Whitmans in Hancock, MA on March 20 at noon. Details enclosed. On SATURDAY, May 20 we will go to the Thompson Speedway in Thompson, CT meeting at 10:00 at guest services. The Crooks will host the June 19 meeting in Little Compton, RI. On July 17, we have planned to have a picnic at the Colt State Park in Bristol, RI. August 21 is a tentatively planned event for a tour of the theater in Millbury, MA. Our weekend at the Cape will be in September. On October 16 there are tentative plans to visit Plymouth Plantation.

Respectfully submitted,  
Jane Palmer, Secretary

## A 1937 Plymouth ad that showed just how glamorous it was to drive a Plymouth !



### Famous CHRYSLER ENGINEERING IN THE LOWEST PRICE FIELD!

**LONGER . . . wider . . . roomier . . . bigger trunks with greatly increased carrying capacity . . . new safety-steel "Unitop" bodies with seamless steel roofs . . . new outrigger-type sound-absorbing body mountings . . . new low-pressure, double-action, Aero-Hydraulic Shock Absorbers . . . from bumper to bumper, refinements and refinements . . . Plymouth for 1937 is the biggest value in the history of a car already famous for low first cost and reliable, economical operation.**

**Engineered for Value**  
Chrysler Engineers' Most Luck of the first Plymouth, both in design and in the highest quality, biggest value, economical car to ever be manufactured. Mounting rails from rear to front have reinforced Chrysler Engineers to add more and more up the frame until today Plymouth is an unmatchable achievement in lifetime working at amazingly low cost!

**Engineered for Beauty**  
Your eye tells you that here are lines, proportions and contours that are correct — tremendously appealing. You will never cease admiring your beautiful new Plymouth as long as you drive it. Beauty is engineering!

saved right into the basic construction design of every Plymouth. That's why their styling appeal is so lasting.

**Engineered for Comfort**  
Rigidity has been moved still further forward. The rear seat center is located further ahead of the rear axle, providing an increased "Floating Ride" of unmatchable smoothness.

The new safety-steel "Unitop" bodies ride cushioned in rubber on the new outrigger-type sound-absorbing body mountings that eliminate all metal-to-metal contact between body and frame. The body "floats" free of the frame and does not jolt up low rough and the hammer blow of the road. These

new-type mountings contribute greatly to the comfort of Plymouth's famous "Floating Ride".

Springs are longer, wider. New Airflex-type low-pressure, double-action Shock Absorbers complete a riding comfort that has been termed "A Million Dollar Ride". Steering and gear-shifting are both improved. Driving is pure delight.

**Engineered for Quiet**  
Added to the quiet of the new body construction are five additional types of insulating materials in fenders, side panels, doors and trunks.

Plymouth bodies are effectively insulated against heat, cold, vibration and noise. It's a new "hushed" ride that is an ever-working as it is a

grinding, bound-to "blizzard" in the new Plymouth as effectively as in the best insulating studio.

**Engineered for Economy**  
Plymouth cars are famous for low gasoline and oil consumption. The extra reliable, economical 32-horsepower motor has been retained and refined. 1937 Plymouth averages about 17 to 27 miles to a gallon of gasoline. Savings in oil up to 20%.

**Engineered for Safety**  
Chrysler Hydraulic Brakes, safety-glass in all windows, safety-wire "Unitop" bodies with seamless steel roofs, new safety equipment packs with all controls at both with the pedal face, surround you with a feeling of confidence control and safety.



**LOW OPERATING COSTS**  
1936 Owners Report 27 to 27 miles to a gallon of gasoline . . . savings in oil up to 20%.

CHECK THESE BIG NEW Extra Value FEATURES

- Safety-steel "Unitop" body with seamless steel roof.
- New 32-horsepower motor.
- New safety-steel body.
- New 32-horsepower motor.
- New safety-steel body.
- New safety-steel body.
- New 32-horsepower motor.
- New safety-steel body.
- New safety-steel body.
- New safety-steel body.

See the new Plymouths at the Motor Shows. Your nearest Chrysler-Plymouth Dealer will be glad to let you drive one. Be prepared for the most thrilling surprise of your motoring life-time.

GET YOUR LOCAL DELIVERED PRICE

BUILT BY Chrysler





Quiz Time.... Can you guess the time and place ???



**Executive Contacts**

**President**

Judy Whitman  
(413) 738-5322  
[gvebigman@gmail.com](mailto:gvebigman@gmail.com)

**Vice President**

Doug Crook  
(401) 635-4213

**Secretary**

Jane + Don Palmer  
(860) 875-0022  
[184palmer@comcast.net](mailto:184palmer@comcast.net)

**Treasurer, Mbr Applications,  
and Member Renewals**

Judi Nichols  
33 Beach St  
Millbury, MA 02879  
(508) 865-2238

**Editor**

[editor@plymouthcarclub.com](mailto:editor@plymouthcarclub.com)

**"Plymouth - Star of the  
forward look"**

**(Plymouth ad slogan  
from the late 1950s)**



**Next Meeting Details – March 20<sup>th</sup>, 2016 12:00 Noon.**

Sunday, March 20, 2016 at the Whitman home in Hancock Mass ☺ ☺ ☺

**Where:** 3326 Rte 43, near Jiminy Peak Ski Area (Approx. 5 miles from Rte22 in NY.)

**What:** Lunch will be at 1:00 at IOKA Farm for pancakes, waffles, etc. followed by our meeting back at the Whitman's. We need reservations at the farm, so please let Don and Judy know if you are coming. 413-738-5322 or [gvebigman@gmail.com](mailto:gvebigman@gmail.com) by March 16th. Cost is \$5 each for members.

**Call is Requested;** Please call Don and Judy at 413-738-5322 by March 16th



Plymouth Colonial Region  
Attn: Newsletter Editor  
57 High St  
Bellingham, Ma 02019

